

**FAX/POST
URGENT**

II
Government of Odisha
Food Supplies and Consumer Welfare Department

No. 6877 / dt. 6-4-15
EC-R-08/15 Bhubaneswar, dated, the 6-4-15

From

Smt. Sakuntala Bindhani, OAS,
Deputy Secretary to Government.

To

The Collectors, Angul, Bhadrak, Boudh, Cuttack, Deogarh, Dhenkanal, Jaipur, Kandhamal, Kendrapara, Keonjhar, Khurda, Koraput, Malkangiri, Mayurbhanj, Nayagarh, Nuapada, Puri, Rayagada, Sambalpur & Sundargarh.

Sub:

Sir/Madam,

Allotment of APL rice for the inmates of ST/SC Hostels managed by NGOs for the month of May, 2015.

I am directed to communicate district-wise allotment of a quantity of 193.830 MT of APL rice under TPDS against Govt. of India allocation for distribution among the inmates of ST/SC Hostels managed by NGOs @ 15 kg. per inmate per month @ Rs.9.30 per kg. for the month of May, 2015 as per Annexure enclosed.

It will be mandatory for these institutions to deposit the cost of food grains to CSO-cum-D.Ms of their districts latest by 20th of April, 2015 and ensure lifting of the allotted quantity by 30th April, 2015 positively as Odisha is a DCP State.

Copies of sub-allocation of APL rice may be sent to concerned MPs/MLAs/Chairperson of P.S./EO of Municipalities under intimation to this Department.

Yours faithfully,

[Signature]
Deputy Secretary to Government

FAX/POST
Memo No.

6878 / dt. 6-4-15

Copy with copy of annexures forwarded to G.M., FCI, Khadya Bhawan, Vani Vihar, Bhubaneswar/ All Area Managers of FCI for information and necessary action.

FAX/POST
Memo No.

6879 / dt. 6-4-15

Copy with copy of annexures forwarded to the Managing Director, OSCSC Ltd., C/2, Nayapalli, Bhubaneswar/ CSOs concerned for information and necessary action.

The concerned CSO-cum-DMs are requested to lift the allotted quantity by 30th April, 2015 and release the required quantity of rice to the listed Institutions (enclosed) on pre-deposit of cost.

Memo No.

6880 / dt. 6-4-15

[Signature]
Deputy Secretary to Government

Copy with copy of Annexures forwarded to PS to Minister, FS&CW/PS to Chief Secretary, Odisha/PS to Commissioner-cum-Secretary, FS&CW Deptt. for information of Hon'ble Minister, FS&CW/Chief Secretary, Odisha/Commissioner-cum-Secretary FS&CW Deptt.

Memo No.

6881 / dt. 6-4-15

[Signature]
Deputy Secretary to Government

Copy forwarded to the I&PR Deptt., for information and necessary action.

Memo No.

6882 / dt. 6-4-15

[Signature]
Deputy Secretary to Government

Copy with copy of annexures forwarded to the Commissioner-cum-Secretary, ST/SC Development Department for information and necessary action.

Memo No.

6883 / dt. 6-4-15

[Signature]
Deputy Secretary to Government

Copy with copy of annexures forwarded to the Dy. Director (MI)/AD(QC)/Website (Shri A.N. Prusty, Sr.DEO), F.S. & C.W. Department for information and necessary action.

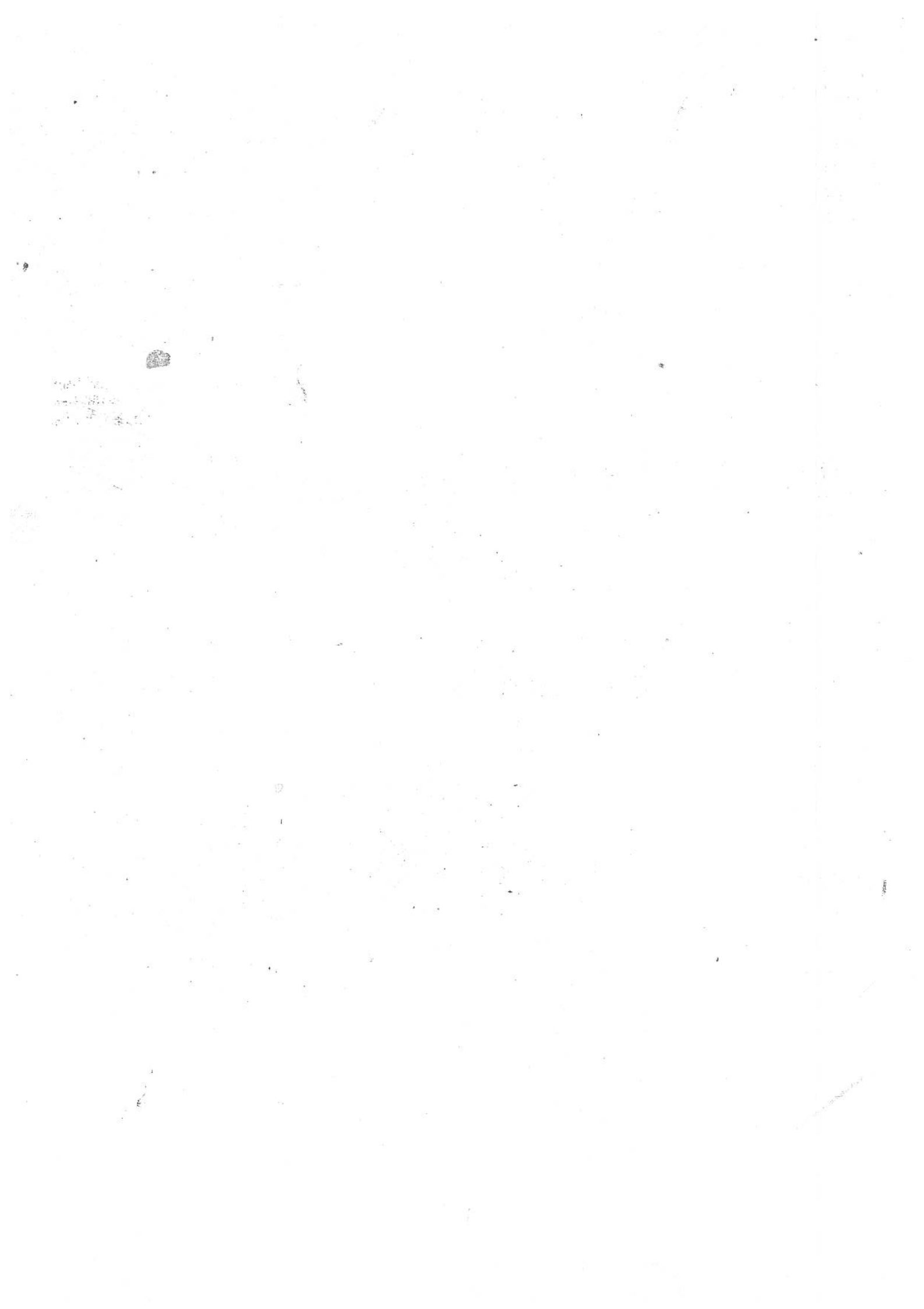
Memo No.

6884 / dt. 6-4-15

[Signature]
Deputy Secretary to Government

Copy with copy of annexures forwarded to Enforcement Section/FS-I Section/Audit Section/Budget & Finance Section/IMU Section/Guard file (Five copies) for information and necessary action.

[Signature]
Deputy Secretary to Government.



Allotment of APL rice for the inmates of ST/SC Hostels managed by NGOs for the month of May, 2015.

(Fig.in MT)

Sl.No.	Name of the District	Name of the Institution with project locations		No. of inmates	Allotment of APL rice @ 15 kg.
1	2	3		4	5
1.	Angul	i)	Educational Complex for Tribal Women, At-Badarohila, PO-Kadalimunda, Dist.- Angul	240	3.6
		ii)	Residential Primary School for SCs, At/PO-Khamara,Block-Pallahara, Dist.- Angul	100	1.5
2.	Bhadrak	i)	Residential Primary School, At-Bayalish Bindha, PO-Matipaka, Via-Basudevpur, Dist.- Bhadrak	100	1.5
		ii)	Hostel for SC Students, At/PO-Aradi, Dist.- Bhadrak	100	1.5
3.	Boudh	i)	Residential Primary School, At- Kaleswar, PO-Butupali,Dist.- Boudh	100	1.5
4.	Cuttack	i)	Hostel for ST Students, At-College Road, PO-Banki,Dist.-Cuttack	150	2.25
		ii)	Residential Girl's Hostel for SCs, At-Thatari Sahi, Chauliaganja, Dist.-Cuttack	100	1.5
		iii)	Residential Primary School, At-Subarnapur, PO-Nuagaon,Via-Niali,Dist.- Cuttack	100	1.5
5.	Deogarh	i)	Residential Primary School, At-Ratanpur, PO-Rengal Beda, Block-Raimal,Dist.-Deoagr	100	1.5
6.	Dhenkanal	i)	Prabasi Educational Complex, At-Batagaon, PO-Batagaon, Via-Kamakhyanagar,Dist.- Dhenkanal	180	2.7
		ii)	Residential Primary School, At-Aswakhola, PO-Karamul,Via-Mahima Gadi, Dist.- Dhenkanal	100	1.5
		iii)	Residential Primary School, At-Kholua,PO-Bainsia, Via-Mahima Gadi,Dist.- Dhenkanal	150	2.25
		iv)	Secondary Hostel for SC, At-Jiridamali,PO-Kanpur, Via-Kamakhyanagar,Dist.-Dhenkanal	100	1.5
		v)	Secondary Hostel, At-Rathapada Grama Panchayati,Ghatipiri,Dist.Dhenkanal	100	1.5
7.	Jajpur	i)	Laxmi Narayan Tribal Residential Primary School, At- Paramandapur, Ragadi, Dist- Jajpur.	100	1.5
8.	Kandhamal	i)	Residential Hostel, At/PO-Bandhagarh, Dist.- Kandhamal	100	1.5
		ii)	Residential Hostel, At/PO-Rabingia, Dist. Kandhamal	100	1.5
		iii)	Residential Girl's School for ST, At-Nahanagaon, PO-Phiringia,Dist.-Kandhamal	100	1.5
		iv)	Residential Hostel for 100 ST Girls, At/PO-Rabingia, Dist.- Kandhamal	100	1.5
9.	Kendrapara	i)	Residential Primary School, At-Haladibasanta, PO-Fakirabad, Dist.Kendrapara	100	1.5
		ii)	Residential Primary School, At-Haladibasanta, PO-Fakirabad, Dist.-Kendrapara	100	1.5
10.	Keonjhar	i)	Educational Complex, At/PO-Masinajodi, Dist.- Keonjhar	182	2.73
11.	Khurda	i)	Ambedkar Educational Complex, At-Kanyashram, Niladri Bihar,PO-Sailashree Bihar, Bhubaneswar, Khurda	100	1.5
		ii)	Hostel for Tribal Students, Gobardhana Campus, At/PO-Banapur,Dist.-Khurda	175	2.625
		iii)	Residential Primary School(ST), At/PO-KIIT, Bhubaneswar, Khurda	3,000	45.0

		iv)	Residential Secondary School(ST), At/PO-KIIT, Bhubaneswar, Khurda	2,000	30.0
		v)	Residential Primary & M.E.School, At-Durga Prasad, PO-Ramachandi, Via-Naranagarh, Khurda	170	2.55
		vi)	Residential Girl's Secondary School, At-Kanyashram, Niladri Bihar, Bhubaneswar, Khurda	100	1.5
		vii)	Residential Primary School, At/PO-Naranagarh, Khurda	100	1.5
12.	Koraput	i)	Educational Complex, At-Minarabali, PO-Doragunda, Via-Baipariguda, Dist.- Koraput	150	2.25
		ii)	Educational Complex, At-Sundiguda, PO-Bariniput, Jeypore, Koraput	150	2.25
		iii)	Educational Complex, At/PO-Gandhinagar, Dist.- Koraput	150	2.25
		iv)	Educational Complex, At/PO-Pedavalada, Bandhugan, Koraput	100	1.5
		v)	KDF Educational Complex for Tribal Girls, At-Udalguda, PO-Assna, Via-Kundura, Koraput	180	2.7
13.	Malkangiri	vi)	Hostel Primary, At/PO-Padwa (D.P.Camp)Koraput	100	1.5
		i)	Educational Complex for ST Girl's, At- Markelguda, PO-Kambada, Via-Orkel, Dist.- Malkangiri	137	2.055
		ii)	Educational Complex for ST Girls, At-Malkangiri, PO-Tamasa(M.V.-7),Malkangiri	140	2.1
		iii)	Residential Secondary School, At-Mundaguda, PO-Maithili,Malkangiri	100	1.5
		iv)	Residential Primary School for S.Cs, At-Mundaguda, PO-Maithili, Malkangiri	100	1.5
		v)	Hostel(Secondary for SC Students), At-Mundaguda, PO-Maithili, Malkangiri	100	1.5
14.	Mayurbhanj	i)	Residential Primary School, At/PO-Goudadihi, Via-Baripada, Mayurbhanj	100	1.5
		ii)	Residential Hostel for Tribal Girls a)At/PO-B.C.Pur, Mayurbhanj b)At/PO/Via-Sarat, Mayurbhanj c)At-Subudiband(Udala),PO-Udala,Mayurbhanj	} 250	3.75
		iii)	Residential Primary School, At/PO – Harekrushnapur, Via- Nalagaja, Dist- Mayurbhanj.	100 (STs)	1.500
15.	Nayagarh	i)	Residential Primary School, At-Lekhanpur, PO-Sarangadharapur, Nayagarh	100	1.5
		ii)	Residential Primary School, At-Khandisi,PO-Jhadapada, Via-Ranpur, Nayagarh	100	1.5
		iii)	Residential Primary School, At-Lekhanpur, PO-Sarangadharapur,Nayagarh	100	1.5
		iv)	Residential Primary School, At/P.O- Khandapara, Dist- Nayagarh	125 (SCs)	1.875
16.	Nuapada	i)	Residential S.T.Girl's Hostel, At/PO-Nuapada, Dist.- Nuapada	100	1.5
17.	Puri	i)	Residential Secondary School, At/PO-Salanga, Via-Nimapada,Puri	100	1.5
		ii)	Residential Hostel(Primary)School, At-Kalyan Bihar, PO-Garhsanput,Bajpur,Puri	100	1.5
		iii)	Rama krushna Mission Ashram, At.Chandan Hajuri,Road, P.o/Dist-Puri	70 (STs)	1.050

18.	Rayagada	i)	Educational Complex, At/PO-Haula, Dist. Rayagada	60	0.9
		ii)	Educational Complex, At-Bariguda, PO-Chatikora, Bissam Cuttack, Dist.- Rayagada	274	4.11
		iii)	a) Educational Complex, At-Jabarguda, PO-Khilapadar, Padmapur, Rayagada	100	1.5
			b) At-Limameda, PO-Chalkamba, Gunupur, Rayagada	100	1.5
		iv)	Educational Complex, At-Gopal Badi, PO-Antamoda, Rayagada	60	0.9
		v)	Educational Complex, At-Hukum Tola, PO-Kutraguda, Rayagada	175	2.625
		vi)	Residential Hostel(Primary)for S.Cs, Thakarbapa Ashram, At/PO/Dist.-Rayagada	100	1.5
		vii)	Ramakrishna Mission Ashram School, Hatamuniguda, Dist- Rayagada.	520	7.800
19.	Sambalpur	i)	Residential Primary School, At-Kulangore, PO-Laidaguna, Kuchinda, Sambalpur	104	1.56
		ii)	Residential Secondary School, At-Kayakud, PO-Mochibaha, Sambalpur	150	2.25
		iii)	Residential Junior Secondary School, At-Bhadimara, P.O-Lipinda, Dist-Sambalpur	100 (SCs)	1.500
20 .	Sundargarh	i)	Residential School, At/PO-Kurumkel, PS-Talsara, Sundargarh	180	2.7
		ii)	Residential Secondary School, At/PO-Telendihi, Dist.-Sundargarh	100	1.5
				12922	193.830

